

## VHM *Crankshafts & connecting rods*

### CRK07 **Honda RS125 2000-2010**

Part number	Description	Content
CRK07	VHM RS125 A-kit connecting rod kit	1x connecting rod, 1x big end pin, 1x bearing, 2x washer



### AK20107-A **Honda RS125 2000 - 2010**

Description
Middle inertia



Spare parts	Description	Content
CRK07	VHM RS125 A-kit connecting rod kit	1x connecting rod, 1x big end pin, 1x bearing, 2x washer

### AK20107-B **Honda RS125 2000 - 2010**

Description
High inertia



Spare parts	Description	Content
CRK07	VHM RS125 A-kit connecting rod kit	1x connecting rod, 1x big end pin, 1x bearing, 2x washer

### AK20164 **Husqvarna TC85 2014 - 2017**

Description
High inertia



Spare parts	Description	Content
DA28069	Synthetic plates	2x black synthetic plates
03.6113	Prox connecting rod kit	1x connecting rod, 1x big end pin, 1x bearing, 2x washer

VHM *Crankshafts & connecting rods*

**AK20213 Husqvarna TC125 2016 - 2017**

Description  
Middle inertia



Spare parts	Description	Content
03.6226	Prox connecting rod kit	1x connecting rod, 1x big end pin, 1x bearing, 2x washer
28109	Plastic insert	1x

**AK20097-1 KTM 65SX 2009 - 2017**

Description  
Middle inertia



Spare parts	Description	Content
03.6029	Prox connecting rod kit	1x connecting rod, 1x big end pin, 1x bearing, 2x washer
DA28062-1	Synthetic plates	2x black synthetic plates (middle inertia)
DA28062-2	Aluminum plates	2x aluminum plates (high inertia)

**AK20097-2 KTM 65SX 2009 - 2017**

Description  
High inertia



Spare parts	Description	Content
03.6029	Prox connecting rod kit	1x connecting rod, 1x big end pin, 1x bearing, 2x washer
DA28062-1	Synthetic plates	2x black synthetic plates (middle inertia)
DA28062-2	Aluminum plates	2x aluminum plates (high inertia)

**AK20164 KTM 85SX 2013 - 2017**

Description  
High inertia



Spare parts	Description	Content
DA28069	Synthetic plates	2x black synthetic plates
03.6113	Prox connecting rod kit	1x connecting rod, 1x big end pin, 1x bearing, 2x washer

VHM *Crankshafts & connecting rods*

**AK20213** **KTM 125SX 2016 - 2017**

Description  
Middle inertia



Spare parts	Description	Content
03.6226	Prox connecting rod kit	1x connecting rod, 1x big end pin, 1x bearing, 2x washer
28109	Plastic insert	1x

**AK20215** **KTM 150SX 2016 - 2017**

Description  
Middle inertia



Spare parts	Description	Content
03.6226	Prox connecting rod kit	1x connecting rod, 1x big end pin, 1x bearing, 2x washer
28109	Plastic insert	1x

**AK20192** **Yamaha YZ125 2005 - 2017**

Description  
High inertia



Spare parts	Description	Content
03.2225	Prox connecting rod kit, 102 mm	1x connecting rod, 1x big end pin, 1x bearing, 2x washer

**AK20192-1** **Yamaha YZ125 2005 - 2017**

Description  
High inertia, +3 mm conrod



Spare parts	Description	Content
03.2221	Prox connecting rod kit, 105 mm	1x connecting rod, 1x big end pin, 1x bearing, 2x washer

Besides the exclusive VHM crankshafts, we can offer a modification on the OEM crankshaft for better performance. Most of the tuned engines are using the OEM crankshaft which is not optimally balanced. When a lighter or heavier piston and connecting rod are used, the balance is not correct anymore resulting in more vibrations and poor performance.

First we determine the total reciprocating weight. Using an advanced computer simulation, we calculate the best balance for each application. Exotic material like tungsten will often be used to modify the balance. After modification the crankshaft will be assembled and aligned with high precision. After modification of the crankshaft you will definitely notice the difference on the track, resulting in better lap times.

Some applications require crankshafts with another inertia for better acceleration, feeling, handling or traction. With your input and our experience, we can modify your OEM crankshaft to a racing crankshaft!

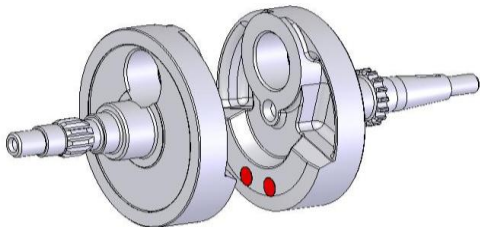


Fig. 2 Example Kawasaki KX250F crankshaft modification

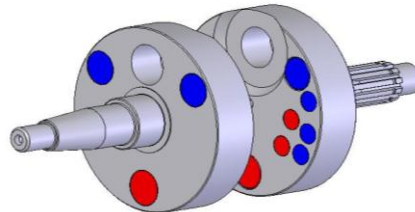


Fig. 3 Example TM 125 K9-C / KZ10 crankshaft modification

Brand & type	Year	Part number	Description
<b>Husqvarna</b>			
TC85	2014 - 2017	AK20161-002	High inertia, modified balance
TC125	2014 - 2015	AK20137-001	High inertia, modified balance
	2016 - 2017	AK20202-001	High inertia
TC250	2016 - 2017	AK20202-002	Middle inertia
	2014 - 2016	AK20133-005	High inertia, std conrod and piston
TC250 Big bore	2008 - 2016	AK20133-004	Using Husqvarna 300 piston, high inertia, modified balance
FC250	2014 - 2015	AK20169-001	OEM crankshaft, lower inertia
	2016 - 2017	AK20203-002	High inertia, modified balance
	2016 - 2017	AK20203-006	Low inertia, modified balance
FC250 Factory	2014 - 2015	AK20169-003	OEM crankshaft with Factory connecting rod kit, lower inertia
<b>Kawasaki</b>			
KX85	2006 - 2013	AK20041-007	High inertia, modified balance
	2014 - 2017	AK20178-001	High inertia, modified balance
	2014 - 2017	AK20178-002	Middle inertia, modified balance
KX125	2003 - 2010	AK20033-001	High inertia, modified balance
<b>KTM</b>			
50SX	2009 - 2017	AK20123-002	High inertia
65SX	2009 - 2017	AK20136-002	Middle inertia, modified balance
85SX	2009 - 2012	AK20086-002	High inertia, modified balance
	2013 - 2017	AK20161-002	High inertia, modified balance
125SX	2007 - 2015	AK20137-001	High inertia, modified balance
	2016 - 2017	AK20202-001	High inertia
	2016 - 2017	AK20202-002	Middle inertia
150SX	2016 - 2017	AK20210-001	High inertia, modified balance
250SX	2008 - 2016	AK20133-005	High inertia, std conrod and piston
250SX Big bore	2008 - 2016	AK20133-004	Using KTM 300 piston, high inertia, modified balance
300EXC	2008 - 2016	AK20143-002	Hotrods crankshaft with silver conrod, using KTM 300 piston, high inertia, modified balance
300EXC	2008 - 2016	AK20143-003	Hotrods crankshaft with brown conrod (stronger), using KTM 300 piston, high inertia, modified balance
		AK20169-001	OEM crankshaft, low inertia
		AK20203-002	High inertia, modified balance
250SX-F	2016 - 2017	AK20203-006	Low inertia, modified balance
		AK20169-003	OEM crankshaft with Factory connecting rod kit, low inertia
450SX-F	2016	AK20211-001	Modified balance
<b>Suzuki</b>			
RM85	2003 - 2017	AK20039-001	High inertia, modified balance
<b>Yamaha</b>			
YZ85	2002 - 2017	AK20063-002	High inertia, modified balance
YZ125	2005 - 2017	AK20063-002	High inertia, modified balance
YZ125	2005 - 2017	AK20063-006	High inertia, modified balance, using 3 mm longer conrod

We provide crankshaft modifications for almost all well-known brands like Honda, Husqvarna, Kawasaki, Maxter, KTM, Suzuki, TM, Vortex, Yamaha and many more. Contact our engineers for more information.